

Parqwood herringbone installation manual

Class 23/33: the **Parqwood herringbone** wooden floor floor is designed for

- Heavy domestic use: bedrooms, living rooms, entrances.
- Heavy commercial use: corridors, department stores, schools, open plan office

A wooden floor is not suitable for saunas, veranda or outdoor use.



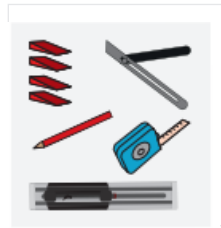
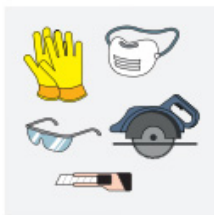
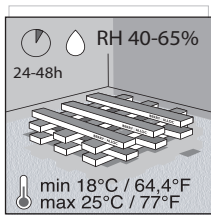
Parqwood herringbone is a unique wooden floor that can be installed in **multiple patterns** thanks to the exclusive **OmniLoc locking system**, developed by BerryAlloc engineers. It is easy to install and creates a strong and solid connection.

- The “**herringbone**” and “**mosaic**” patterns require two plank types: A planks and B planks. These are packaged separately, so do not forget to notify your BerryAlloc dealer that you require both types if you choose this pattern.
- The “**shipdeck**” and “**ladder**” patterns only require one plank type: the A planks.

Parqwood herringbone wooden floor is designed for floating installation, but can also be fully glued to the subfloor without underlay. Read our separate manual if you prefer a fully glued installation.

For a perfect result that meets the warranty requirements, we advise you to carefully follow the installation instructions listed below. To prevent unintended damages, it is advisable to complete the installation of the laminate floor as the final step in the renovation process.

1. planning your installation



It is necessary to store the boxes at room temperature for at least 48 hours before installation.

Do not open the packs but make sure to stack them so they have maximal air contact.

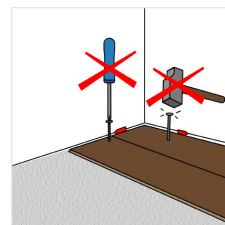
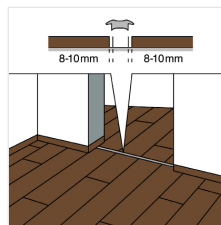
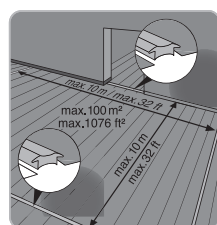
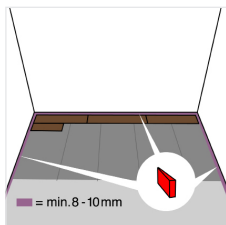
The room should be perfectly dry, closed, at an ambient temperature between 18 and 25°C, and the air humidity maintained constant between 40 and 65% with the ventilation system running throughout the duration of the project. In some climates, such as in the Nordics during winter time, the RH level might drop far below 40% and in summertime rise above 65%. This will create a movement in your wood flooring. To secure enough clearance for this natural movement and to avoid open joints, squeaking, etc., always keep sufficient expansion gap at all points of the installation.

tools

- sawing machine
- the BerryAlloc installation tool (ref. 63003584)
- spacers, measure tool and pencil, angle meter

For your safety, use protective clothing: gloves, dust mask, protective glasses.

Do not forget the Excellence Plus underlay, matching skirtings and finishing profiles.



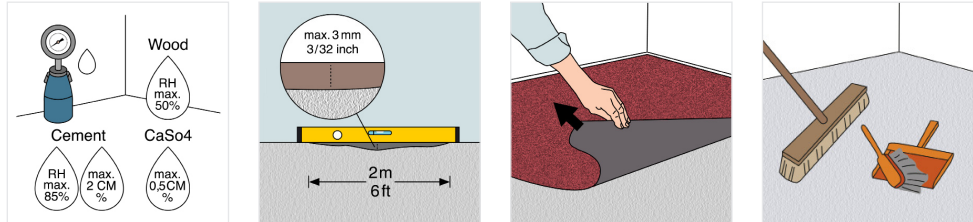
Parqwood herringbone is a wooden floor, and should be able to expand/shrink freely, therefore for a floating installation:

- Do not screw the floorboards to the subfloor.
- Do not install the wooden floor under fixed constructions such as kitchen cabinets or built-in closets.
- Leave an 8-10 mm expansion gap between walls and other fixed constructions so that the floor can move.
- Always install expansion profiles in doorways.
- Install expansion profiles in areas where the room length/width exceeds 10 m.

2. preparing the subfloor

BerryAlloc wooden floor can be installed on most hard subfloors, e.g. chip/plasterboards, non-compressible PVC, or concrete

(keep in mind to verify if the existing subfloor construction is fixed).



The subfloor must be totally dry:

- wooden and wood based material, max. 50 % relative humidity
- concrete and light concrete floor, max. 2,0 CM % (1,8 CM % if floor heating)
- plaster and plaster based floor, max. 0,5 CM % (0,3 CM % if floor heating)

The subfloor has to be even (max. height difference of 3 mm per 2 m).

Smoothen sharp edges and fill any holes.

This is important because an uneven subfloor can cause squeaking noises.

Soft material like a wall-to-wall carpet needs to be removed.

Clean the subfloor before you start the installation.

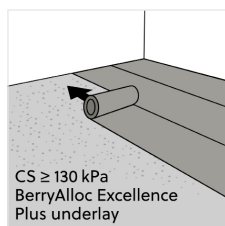
On an existing wooden floor, BerryAlloc wooden floor should be installed perpendicular to the old floorboards.

3. floor heating/cooling



If you have a subfloor heating system, be sure to read our separate manual for installing wooden floor on top of floor heating.

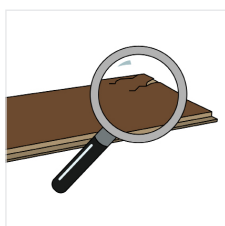
4. underlays



BerryAlloc underlays are specially developed for our floors, and with the same high quality standards, to ensure a perfect result. The specific design of the Parqwood herringbone planks requires a high performance underlay with a compression strength of min. 130 kPa and a thickness between 2 and 3mm. The BerryAlloc Excellence Plus underlay (ref. SEPLUS10) is the perfect base for Parqwood herringbone.

In fully glued installations, the wooden floor floor has to be glued to the subfloor. In that case, you cannot use an underlay.

5. installing your Parqwood herringbone floor



Check all planks for visible defects in optimal light conditions, both before and during installation. Planks with defects must not be used.

For the most natural floor pattern, make sure to mix the designs of the planks throughout the installation.

Parqwood herringbone installation manual

Pick your pattern!

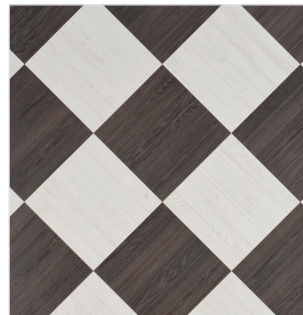
Parqwood herringbone is a dream floor for creative installers. Multiple patterns are possible, and a wide variety of colors allows you to mix and match, and add some personality to your royal floor: **herringbone**, **shipdeck**, **ladder**, and **mosaic**.



herringbone



herringbone



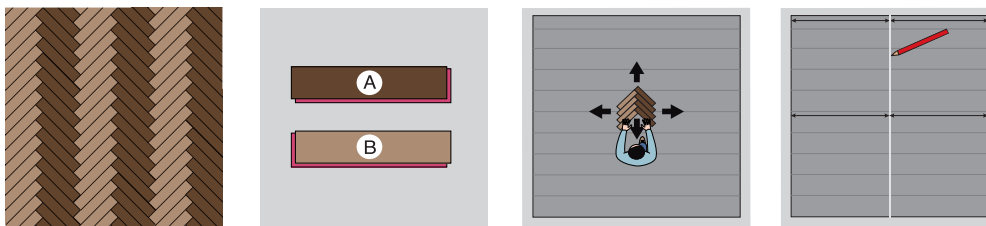
diagonal mosaic



herringbone random colours

All the designs of Parqwood herringbone are also available in our standard plank size 1288x190 water resistant Ocean 8 V4, so you can switch plank sizes in different rooms, but keep the same design and overall look.

5.1 the herringbone pattern

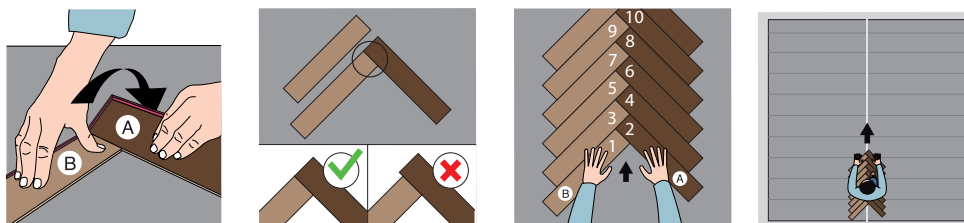


For the herringbone pattern, you'll need two different plank types: A planks and B planks.

If you take both planks and place the long side with the groove towards you (marked in red above), the groove will continue to the right on the A-plank and to the left on the B-plank. All planks are also marked with "A" or "B" on the back. Keeping different stacks readily available can make your job easier.

The unique **OmniLoc locking system** enables you to start in the middle of the room, and continue the installation in all directions.

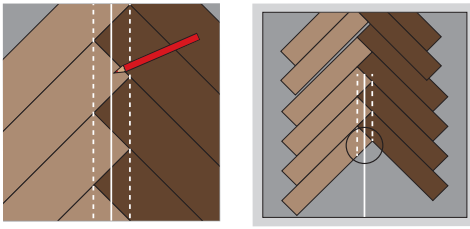
Measure the middle of the room and draw a center line on the Excellence Plus underlay so you can align your herringbone pattern with the center line later on.



Start assembling a herringbone pattern using a B plank first, then a A plank. Make sure the longer groove side is on the 'outside' of the V, that way you can slide the next plank into position using the groove. Check if the A and B plank are perfectly aligned before you install the next plank.

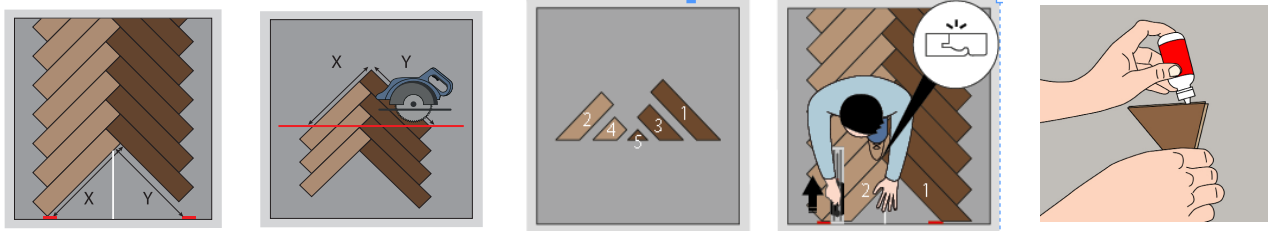
Alternate B and A and continue until you finish one full row.

Parqwood herringbone installation manual



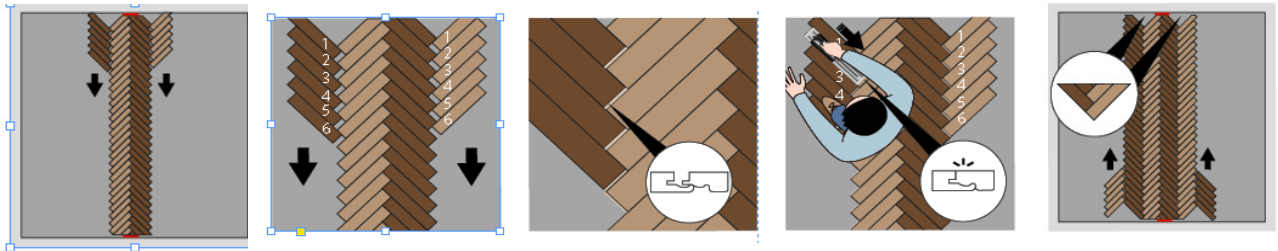
Determine the center of the herringbone pattern by drawing two parallel lines that connect the corners of the planks. The middle of those lines is the center of your herringbone pattern.

Align the center line of the herringbone pattern to the center line of the room on the underlay before you continue.



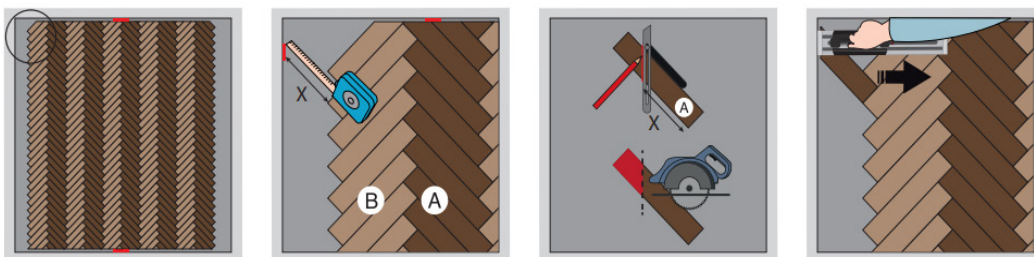
Measure the distance between the wall and the inner corner of the floor on both sides (size "X" and "Y"). Deduct the space for the expansion gap of 8-10mm.

Assemble a few planks in herringbone, and copy the dimensions to those planks. Draw the cutting line and cut the triangle that will fit the gap. Install the planks one by one, use the installation tool to pull the plank in the loc, and use spacers to prevent the floor from moving. Apply wood glue when installing small pieces.



To continue the installation, go to the side of the B planks, take a pile of A planks and prepare 6 planks for locking by putting them exactly in front of the lock of the B plank. Then pull the 6 planks one by one in the lock using the locking tool, and continue with 6 more planks until you finish that row. Add B planks to the other side and do exactly the same.

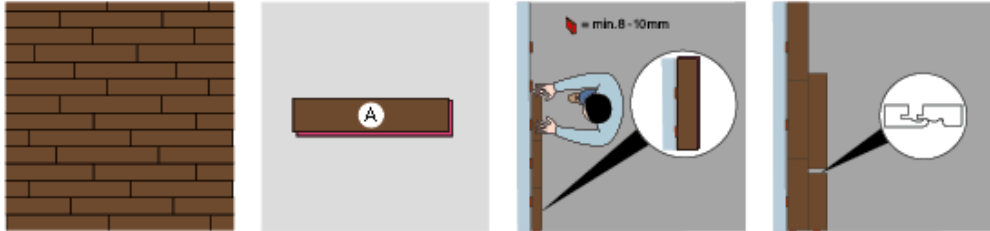
Before you continue your installation, we recommend to fix these 4 complete rows to the center by finishing the 2 triangles first. After that you can easily build more rows to the left and to the right.



To cut the planks to size at the side wall, measure the distance from the wall to the corner of the plank, where the wooden floor design ends. Consider the expansion gap of 8-10mm! Put a plank in the right direction and copy the dimensions to the side of the plank. Draw a 45° line across the plank and cut it. Pull the planks into place using the installation tool.

strong wood floors.

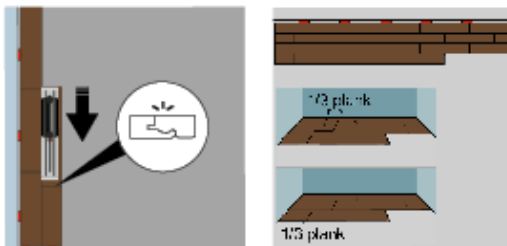
5.2 the shipdeck pattern



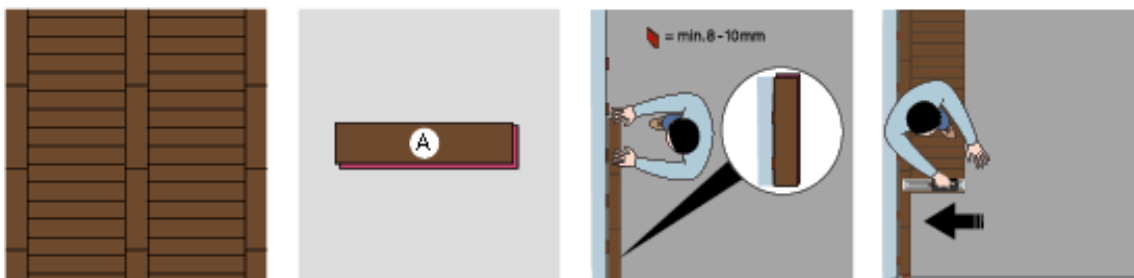
If you choose the shipdeck pattern, you only need one plank type, for example A planks.

First install the Excellence Plus underlay according to the instructions on the underlay packaging. Put a first plank in the corner of the room with the groove side pointing towards the direction of the installation. Keep an expansion gap of 8-10mm between the floor and the walls.

When you put the second plank, make sure that the planks are perfectly aligned. Continue the installation and use the installation tool where needed. For a natural result, stagger the short sides in a random way, but always keep a distance of approx. 1/3 plank in mind.



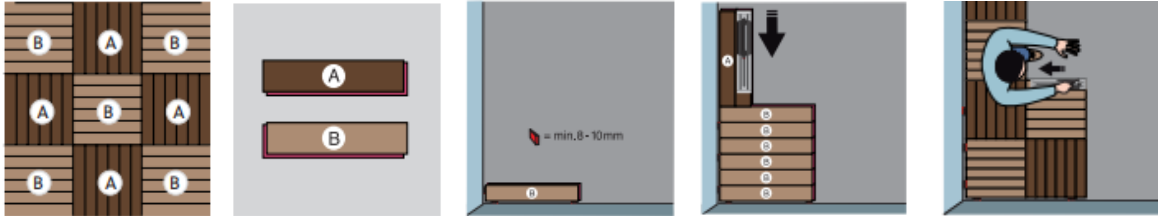
5.3 the ladder pattern



Parqwood herringbone can also be installed as a ladder pattern, with only one plank type, for example the A planks. First install the Excellence Plus underlay according to the instructions on the underlay packaging.

Start installing as in a shipdeck pattern, and then install the next row in the opposite direction, using the installation tool to lock the planks in the side of the other planks. Always keep an expansion gap of 8-10mm between the floor and the walls.

5.4 the mosaic pattern



For the classic mosaic pattern, you need both plank types: A and B.

First install the Excellence Plus underlay according to the instructions on the underlay packaging.

Install 6 A planks, with an expansion gap of 8-10mm between the floor and the walls. Then switch the direction and continue with the 6 B planks, groove always pointing in the laying direction. Use the installation tool to lock the short side into the long side, and make sure the planks are perfectly aligned.

Continue the installation square by square, row by row.

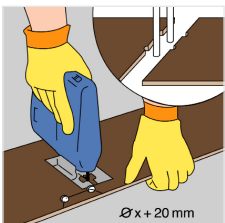
5.5 doorframes and heating pipes



Wooden doorframes should be shortened enough to make a plank and underlay fit underneath. Lay a panel facedown next to the doorframe.

Saw the doorframe, then slide the plank under the doorframe. Keep an expansion gap under the doorframe of 8-10 mm!

in case of metallic door frame, you can use our FillerTwine to fill in the expansion gap before to apply a flexible sealant. This will always allow the parqwood to expand or shrink.



If you have heating pipes, measure their exact position and mark it on the wooden floor.

Add 20 mm to the dimension of the pipe, because the wooden floor has to be able to move in all directions around the pipe.

Saw in an angle of 45° from the drilling holes to the side of the wooden floor and put the wooden floor in place.

6. A perfect finish

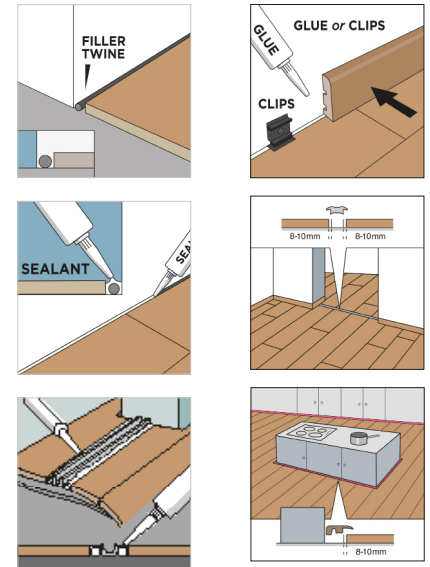
BerryAlloc offers a wide range of accessories with a timeless design for the finishing touch:

- Skirtings 69 mm;
- Expansion profiles: T-profile, threshold profile, end profile

Paintable white skirting and quarter rounds are also available and can be used unpainted, or they can be painted in the same colour as your wall.

When installing accessories on a floating floor, always keep in mind that the floor has to be able to move. This means:

- Skirtings should never be attached to the floor, they can be fixed to the wall with clips or in case your walls are not straight, use the BerryAlloc glue to glue the skirting to the wall.
- After you have installed a skirting or profile, do not seal/fix it to the Parqwood with sealant. The movement of the Parqwood will cause cracks in the sealing product which makes the sealant ineffective and unesthetic.
- Expansion joints around fixed building elements (door frames, heating pipes, etc.) should never be completely sealed with elastic filler.
- Profiles, door stops and other accessories cannot be be screwed to the substrate through the floating floor.



7. Care and maintenance

A Parqwood floor is very easy to clean:

- **DRY CLEANING:** with a brush, mop with dry wipes or vacuum cleaner
- **WET CLEANING:** with a well wrung-out cloth – avoid using too much water!

Clean up any spilled liquids immediately.

We strongly recommend to use the BerryAlloc cleaner (ref. 63002745), it's specially developed to clean our floors and leaves no traces.

Never use steam cleaners on Parqwood floors.

Put doormats at every entrance to protect your Parqwood from dirt and sand.

Lift heavy furniture and put felt pads on the legs of your chair. Use a protective floor mat under your castor chair.

Parqwood can not be polished or treated with products that contain wax or oil.

For more details: read our care and maintenance manual.



8. Warranty

By following the above mentioned instructions you will extend the longevity of your Parqwood flooring and ensure the validity of the warranty.

We refer to our warranty conditions or warranty policy for more info.

Installation videos.