

07/2025

1. An underlay for every room

BerryAlloc underlays are designed to **enhance your living comfort** and **ensure the perfect installation** of your new laminate floor. Our underlays adhere to the same high-quality standards as our laminate floors and are multifunctional:

- They offer **noise reduction** by minimizing impact sound (room below) by at least 19 dB and reducing footstep noise (within the room itself).
- They provide **high-quality support** to your floor and protect the locking system. A low-quality underlay can damage your floor, while a good underlay will prolong the lifespan of your laminate flooring.
- They **correct minor irregularities** in your subfloor, creating a level base for floor installation. Read the instructions below on how to prepare the subfloor.
- They always include an **integrated moisture barrier** to protect your laminate from seasonal changes in subfloor humidity. With the integrated barrier, installation time is reduced, as there is no need to install a separate moisture barrier.

Please note that our HPF floors with attached underlay do not have a moisture barrier, so if a moisture barrier is required, you need to install it separately.

The BerryAlloc **Excellence Go 60** underlay is an XPS underlay that has good sound reduction qualities, offers sufficient support to the floor and it is compatible with underfloor heating. It is a good **all-round value for money** underlay, suitable for rooms with normal foot traffic.

The **Excellence Impact+** underlay is an HFPS underlay with a **high impact resistance**, making it very strong and suitable for more demanding projects. Choosing an underlay with high impact resistance ensures that the flooring remains protected and maintains its appearance and functionality, even under challenging conditions.

The **Excellence Plus** PU-underlay is our **preferred underlay by expert installers**, as it combines the best of all worlds: it has the highest sound reduction qualities, offers excellent support to any laminate or parquet floor and is the best choice for installations over floor heating/cooling systems. Excellence Plus also is the recommended underlay for all Chateau+ installations.

The **Excellence Go 60 Pro** underlay is a 2mm PE underlay with mainly the same qualities as the Excellence Go 60 underlay, but it comes in **big rolls of 30m²** with a minimum of packaging. The perfect product for bigger projects!

	Excellence Go 60 63003600	Excellence Impact+ 63000905	Excellence Plus SEPLUS10	Excellence Go 60 Pro 63003705	pad-attached (for HPF)
m ²	15	12	10	30	/
Thickness	2 mm	3 mm	2,5 mm	2 mm	2 mm
Corrects unevenness	✓	✓	✓	✓	×
Moisture barrier	✓	✓	✓	✓	×
Impact sound *1	-19 dB	-19 dB	-21 dB	-19 dB	-19dB
Walking sound *1	**	***	****	**	***
Compression strength*2	60 kPa	60 kPa	130 kPa	60 kPa	70kPa
Impact resistance*2	***	****	**	***	***
Floor heating/cooling	***	**	****	***	***
Easy to install	✓	✓	✓	✓	attached to floor

For more detailed technical specifications and values on the underlays, you can download our technical data sheets.

07/2025

*1 impact sound vs. walking sound:



Impact sound is the sound that reflects through the floor to the room(s) below.



Walking sound is the reflection of the sound within the room itself.

*2 compression strength vs. impact resistance:



Compression strength is the resistance of a material to deform under compression.



Impact resistance is the ability to absorb the impact of falling objects.

All underlays are suitable for underfloor heating/cooling, but **Excellence Plus** has the lowest thermal resistance value. More details about installing laminate over underfloor heating systems can be found in the **Installation manual for laminate on underfloor heating/cooling**.

Some of the BerryAlloc **HPF** collections come with an **integrated 2 mm Silent System underlay**, which functions effectively as an underlay and provides a transit sound reduction of 18-19 dB. We strongly recommend using the **BerryAlloc Moisture Barrier (ref. WD158235)** under HPF floors with the Silent System to protect them from rising moisture. This PE foil, at 0.2 mm thickness, is easy to install and age-resistant. A moisture barrier is essential for installations on concrete, screed, or over heating systems.

2. installing your underlay or moisture barrier

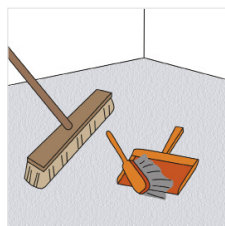
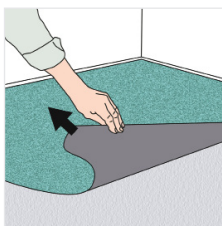
2.1 Preparing the subfloor

BerryAlloc laminate and HPF can be installed on most hard subfloors, e.g. chip/plasterboards, PVC, or concrete (be sure that the existing subfloor construction is fixed).

The subfloor must be totally dry:

- Wooden and wood based material, max. 50 % relative humidity
- Concrete and light concrete floor, max. 2,0 CM % (1,8 CM % if floor heating)
- Plaster and plaster based floor, max. 0,5 CM % (0,3 CM % if floor heating)

The subfloor must be even, with a maximum height difference of 4 mm per 2 m (3 mm for Chateau+), dry, and clean. Sharp edges should be smoothed out, and holes filled. This is crucial because an uneven subfloor can cause squeaking.



Soft material like a wall-to-wall carpet needs to be removed.

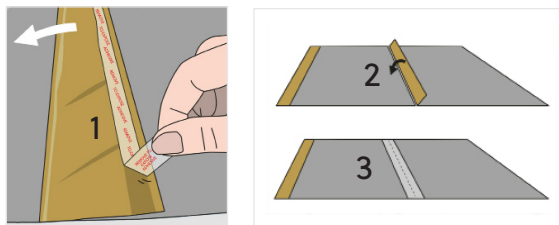
Clean up any sand or dirt before installing the underlay.

07/2025

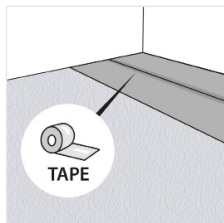
2.2 Installation

All BerryAlloc underlays have an **integrated moisture barrier**. Always install the BerryAlloc underlay with the moisture barrier face up. To completely seal the moisture barrier surface, underlays with an integrated moisture barrier should either be connected by an integrated **adhesive strip** (included in Excellence Go 60, Excellence Go 60 Pro and Excellence Impact+ underlays) or by a **water resistant tape** (included in the Excellence Plus underlay). Never overlap the underlays themselves.

Excellence Go 60 , Excellence Go 60 Pro and Excellence Impact+ come with an integrated peel-off adhesive strip. Remove the film (1), flip over the lip (2) so that it connects both underlay rows and press to stick (3).



Excellence Plus comes with a separate water resistant tape roll to connect the strips of the underlay.



If you use the **BerryAlloc Moisture barrier** separately you should always install it with an overlap, taped and turned up against the wall. You can cut the foil to size after the flooring installation.

Remark: Do not use additional underlay when you install your pad-attached HPF floor.

