

Herringbone installation manual



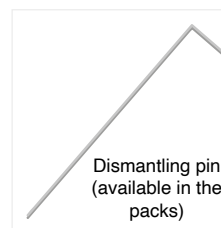
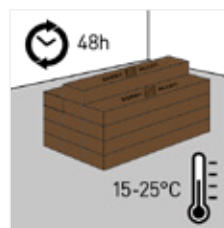
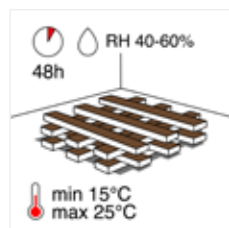
Class 23/33: the **ZENN** collection is designed for:

- Domestic use: bedrooms, living rooms, kitchens, entrances
- General commercial use: classrooms, small offices, hotels, boutiques

For a perfect result that meets the warranty requirements, we advise you to carefully follow the installation instructions listed below. Please also refer to local regulations which may vary by country.

Zenn Rigid click is not suitable for outdoor use and verandas/winter gardens

1. Planning your installation



It is necessary to store the boxes at room temperature for at least 48 hours before installation. Do not open the packs but make sure to stack them so they have maximal air contact.

The floor should be installed in a room temperature of 15 to 25°C and a relative humidity of 40-60%.

tools:

- electrical or hand saw
- spacers
- knife
- measurement tool and pencil, T-square.
- dismantling pin (available in the packs)

The herringbone Zenn collection must be installed as a floating floor.

- Do not screw the floorboards to the subfloor.
- Do not install the floor under fixed constructions such as kitchen cabinets or built-in closets.
- Leave a 8 mm expansion gap between walls and other fixed constructions so that the floor can move.
- Take into account the room dimensions & temperatures below, so that you don't need to use profiles in your doorways.
 - 5-25°C (Heating, Ventilation & Air Conditioning): 30 x 30 m
 - 5-40°C (normal): 15 x 15 m

A T-profile is required when:

the length or width of the installation is above 30m;
there is a construction joint in the building;
there are different underfloor heating circles.

An expansion gap of min. 8mm has to be respected around fixed structures as: doorframes, walls, door stop,

built-in wardrobe, pipes, kitchen cabinets, ...

Advice:

Separate the bathroom from the rest of the rooms with an expansion profile. T-profiles in doorways are recommended in case of high temperature difference (above 10°C) between 2 adjoining rooms.



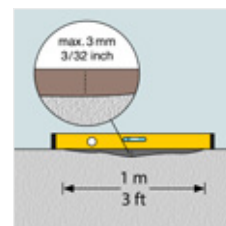
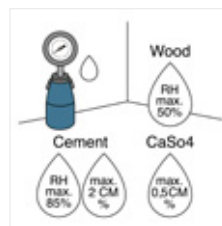
2. Preparing the subfloor

Careful subfloor preparation is essential for an excellent result. Soft material like a wall-to-wall carpet and cushion vinyl, linoleum, cork, etc. needs to be removed. Clean the subfloor before you start the installation, meaning, remove all traces of plaster, paint, glue, oil, grease, debris (including nails) etc. and vacuum.

Herringbone Zenn collection can be installed on top of concrete, screed and most existing hard surface floor (e.g. chip/plasterboards coverings), provided that the subfloor is even, dry, clean, stable, fixed and free of cracks.

The subfloor must be totally dry:

- Wooden and wood based material, max. 50 % relative humidity
- Concrete and light concrete floor, max. 2,0 CM % (1,8 CM % if floor heating)
- Plaster and plaster based floor, max. 0,5 CM % (0,3 CM % if floor heating)



The subfloor has to be even (maximum deviation of 3 mm per m or 1 mm over a length of 20 cm). If the indicated deviation is exceeded, the subfloor must be levelled out with a suitable filler. Smoothen sharp edges and fill any holes. This is important because an uneven subfloor can cause squeaking noises or may telegraph through the new floor, resulting in an unsightly surface and causing excessive wear on high spots or indentation on lower spots.

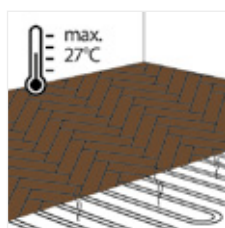
Check the subfloor for moisture problems. The joints of the new floor covering should never be aligned with the underlying tile joints. It is not necessary to fill the grouts of a subfloor comprised of ceramic tiles with joints when these do not exceed 5 mm in width. Bear in mind that some ceramic tiles may show rising edges/corners although the main level may be correct. These parts may telegraph through the floor covering in the future

Soft material like a wall-to-wall carpet needs to be removed.

Clean the subfloor before you start the installation.

On an existing wooden floor or ceramic, BerryAlloc should be installed perpendicular to the old floorboards.

3. Floor heating/cooling



Zenn rigid click floor is compatible with underfloor heating, provided that the temperature on the surface of floor covering does not exceed 27°C. With electrical underfloor heating, we recommend not exceeding 60W/m². Be aware that expansion gaps between separate heating circles in subfloor must be taken over to any floor covering.

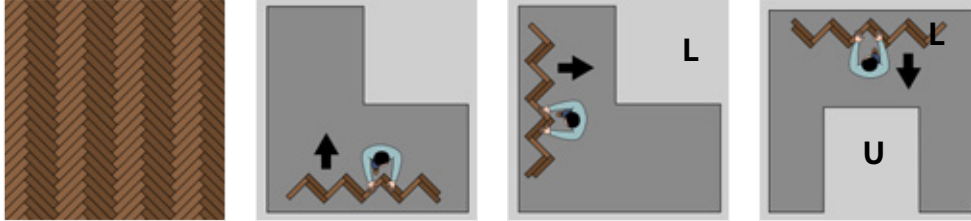
4. Installing your floor



Planks with defects or damage must not be installed. Make sure that you mix panels from different boxes to ensure a more natural looking floor. Floating should be installed floating, not to be screwed or nailed down to the subfloor



4. The installation



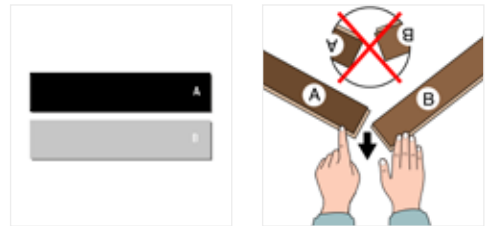
Consider the shape of your room when choosing your start wall. For L- or U-shaped rooms, please check the illustrations.

For the herringbone pattern, two plank types are needed: A planks and B planks. Precise the number of each type of plank per pack. Take a plank and turn the side with the long groove towards you.

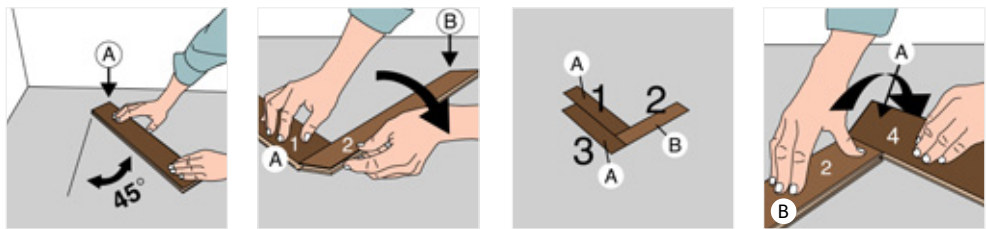
The groove continues along the short side to the RIGHT for A planks, and to the LEFT for B planks. Always make sure the grooves are pointing towards the laying direction.

All planks are marked with "A" or "B" on the back. You will see that the A planks have a black backing & B planks have a grey backing.

Start making V-shapes along the starting wall with an A plank (1) in a 45° angle, connect it with a B plank (2), and then add another A plank (3) to the left again, to secure the connection.

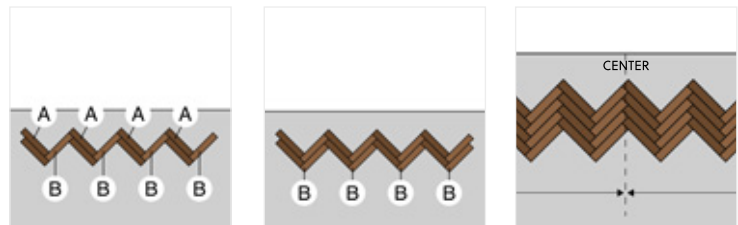


Continue to the right adding another A plank, and so on. Begin and end with a full V-shape.



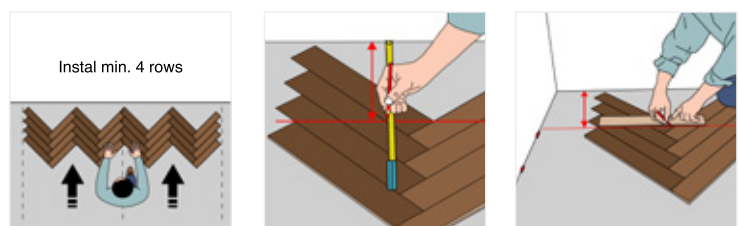
Continue the installation by adding B and then again A planks, until you have finished at least 4 rows.

Determine the center of the starting wall and the center of your floor, and align them before you continue.



Shift the installed floor towards the starting wall and draw a cutting line across the whole row, parallel to the wall.

Use tape to keep the planks together on both sides of the cutting line. Use blocks to lift the planks to cut them more easily. Or use a precision sawing machine to cut.

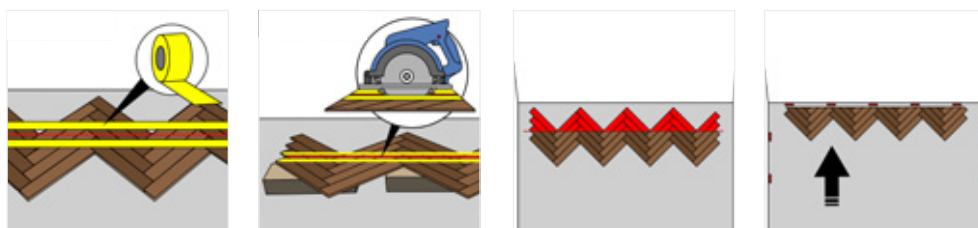


Zenn collection rigid click herringbone with integrated underlay

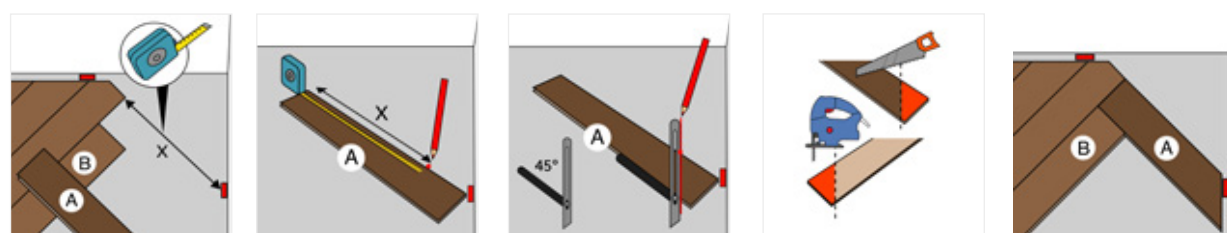
BERRY  ALLOC



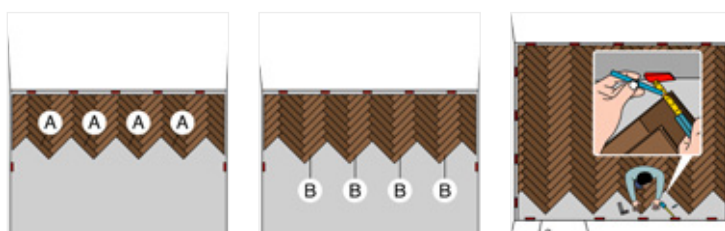
Shift the floor against the wall.



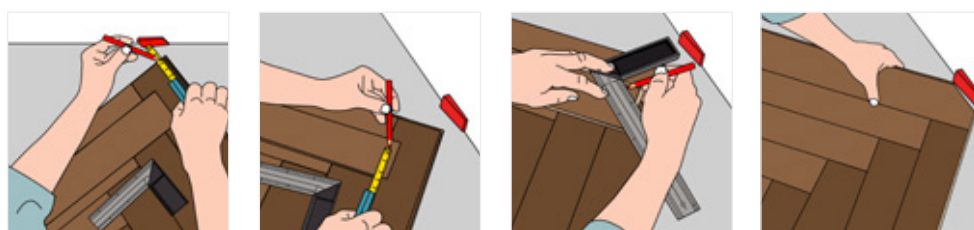
Remember to consider the expansion gap when measuring the size of the last planks in the row. If using a hand saw, cut on the pattern side, if using an electrical jigsaw, always cut on the backside of the plank. A sharp saw blade is a must for the best result.



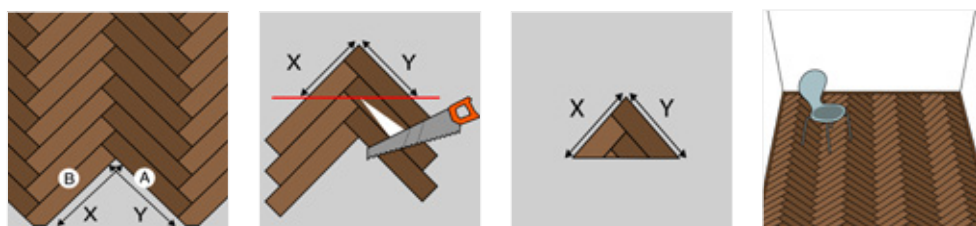
Continue the installation row by row: a series of A planks, and then a series of B planks. In the last row, you will have to cut the planks again.



Measure the distance from the wall to the corner of the plank, where the design ends. Take into account the expansion gap of 8 mm.



When installing the last planks, measure the remaining space (X and Y). Assemble a triangle of A and B planks and indicate the dimensions of X and Y to form a cutting line.





5. How to disassemble planks?

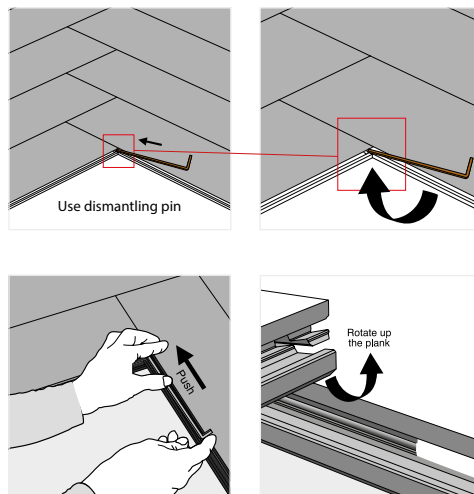
Use the dismantling tool included in the packaging. You can find it in the boxes, so open all the boxes before you start the installation and take out the dismantling tool.

Why is this required?

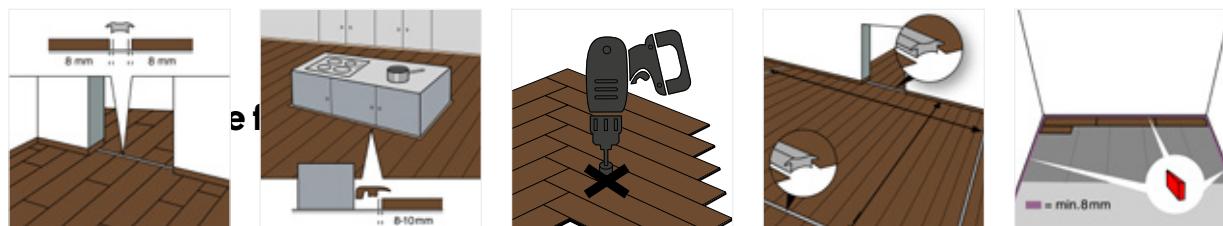
- to unlock the products, so a plank can be taken out without breaking the locking system.

When is this needed?

- when an installation need to be re-done
- when the finishing touches to the floor need to be done



When a plank is locked, it is not possible to simply remove it by hand. Use the 5G® dismantling pin to disassemble the planks. Insert the pin in the click system and push it until reaching the end of the plank. Lift up the plank, for your safety, use protective clothing: gloves, dust mask, protective glasses.

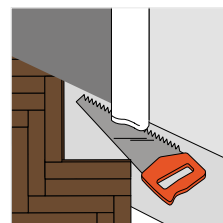


Wooden doorframes should be shortened enough to be able to put a plank under it.

Lay a panel facedown next to the doorframe. Saw the doorframe, then slide the plank under the doorframe. Keep an expansion gap under the doorframe of 8 mm to the wall!

BerryAlloc offers a wide range of accessories with a timeless design for the finishing touch:

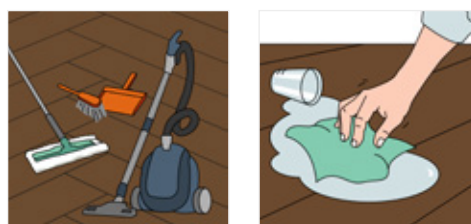
- Matching skirting of 60 mm high
- Matching profiles
- Aluminium floor profiles
- Paintable white skirtings are also available and can be used unpainted, or painted in the same colour as your wall.
- Skirtings should never be attached to the floor: they can be fixed to the wall with clips. In case your walls are not straight, use the BerryAlloc glue to fix the skirting to the wall.
- After installing a skirting or profile, do not seal/fix it to the floor with sealant.



7. Care and maintenance

Initial cleaning

First remove all dirt and dust from the flooring with a brush or vacuum cleaner. Then clean with water and an appropriate neutral cleaning agent, at least twice and until the water stays clean. We strongly recommend using BerryAlloc Vinyl Planks cleaner & PU protector. Any other cleaning product may contain agents that damage resilient floor surfaces.

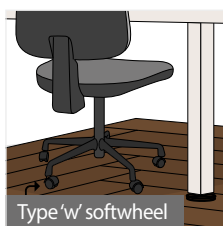


Zenn collection rigid click herringbone with integrated underlay

BERRY  ALLOC

Regular cleaning instructions

Vacuum or use a wet mop. We strongly recommend using BerryAlloc Vinyl Planks cleaning products, as other products may damage your flooring surface. Do not flood the floor or leave a puddle of water on the floor. Rinse thoroughly and soak up residual water.



To keep your floor in good condition, it is important to place **non-rubber backed doormats at all entrances**, to prevent dirt or grit on your floor. The use of doormats will eliminate abrasive particles carried by footwear and will reduce damage. Do not use rubber-backed mats, as long-lasting contact with rubber can cause permanent discolouration. Never place doormats on a wet floor.

Rolling office chairs, furniture legs, fitness appliances, etc. should be fitted with **soft, non-rubber casters**, to avoid permanent damage to your floor. Use a suitable desk mat.



We recommend **the use of felt pads or protective feet for items that contain rubber**, such as chair legs, furniture legs, fitness appliances, etc. Use specific protection under heavy/sharp furniture to avoid indentation.

8. Warranty

By following the instructions mentioned above, you will extend the longevity of your rigid click vinyl flooring and ensure the validity of the warranty. For more info, please refer to our warranty conditions and warranty policy.

9. legal information

This document presents the general installation instructions, based on the latest available information. For the best result, and to ensure the validity of the guarantee, these instructions should be followed carefully. This document replaces all previous versions and is valid until further notice. This information is a representation of the technical know-how at the time that this document was produced/published and may be amended, complemented or replaced at any time.

Please check the following website frequently for updates:
www.berryalloc.com

enjoy your berryalloc floor!