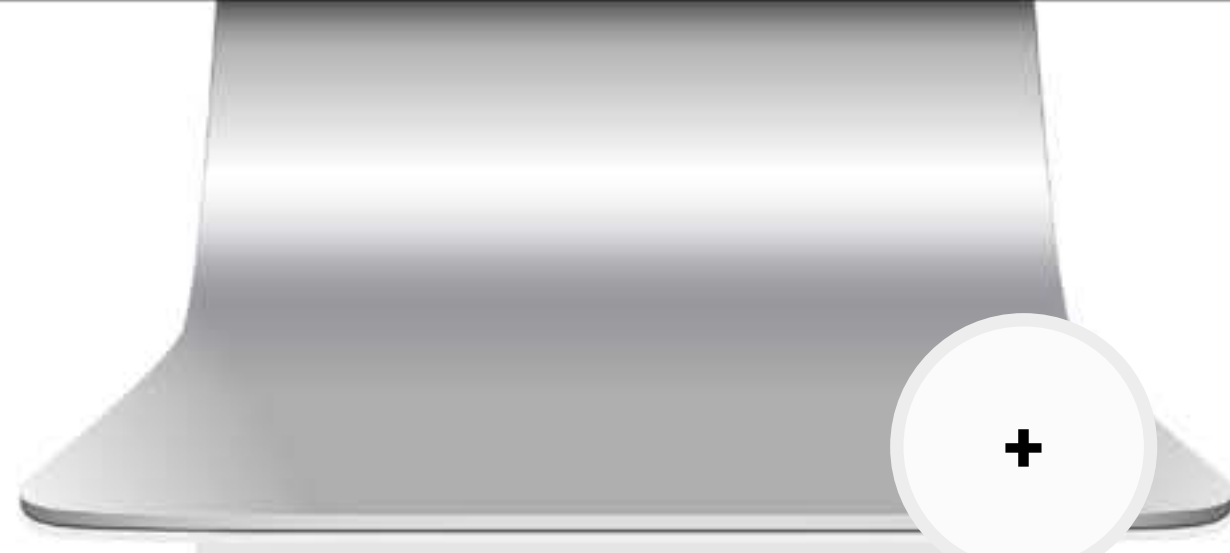
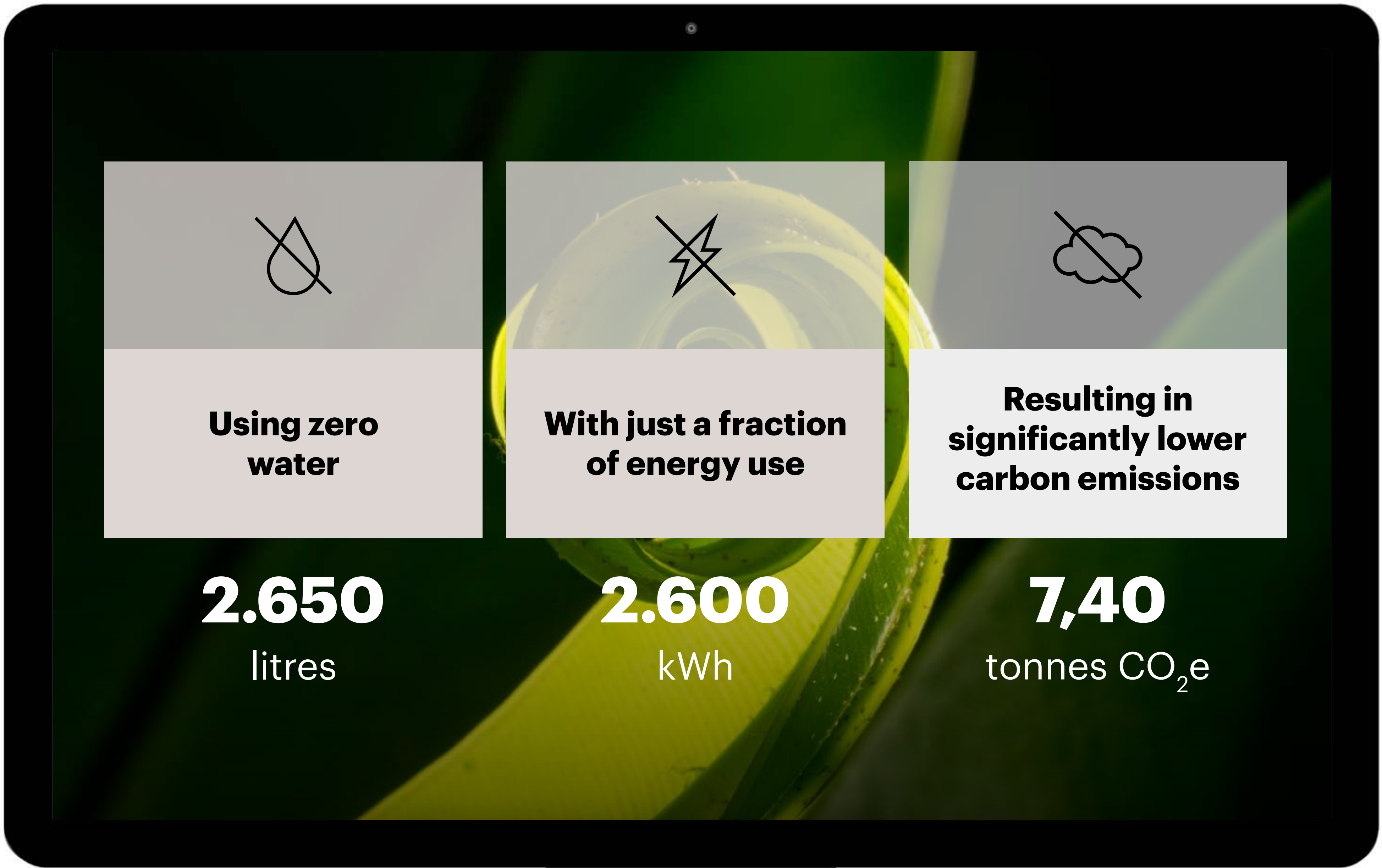


What are our savings if we choose Rewind event carpet?

10.000 m² →



Cradle-to-gate

2,10

This reduction is based on the difference in total Global Warming Potential of raw materials and the production process of Rewind® Flat and traditional Plat Precoat event carpet.



Recycling

5,30

This reduction in environmental impact relates to the difference in end-of-life of 100% recycling Rewind® Flat versus 100% incineration traditional Plat Precoat event carpet.

REWIND®



REWIND®

What you need to know about the EPD



For the EPD results of Rewind®, visit

Rewind® Flat

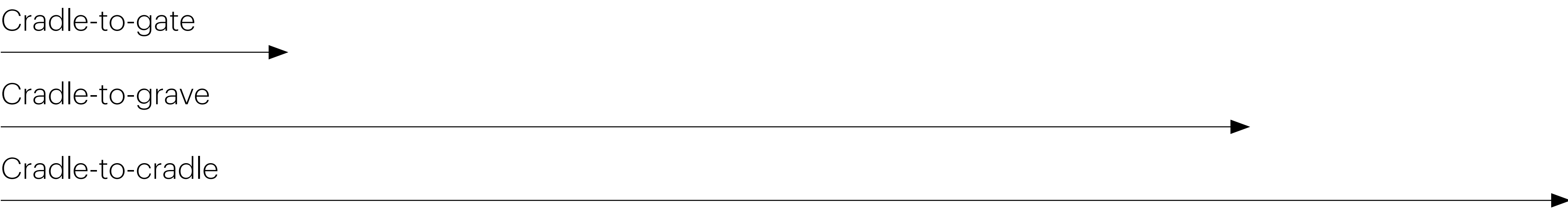
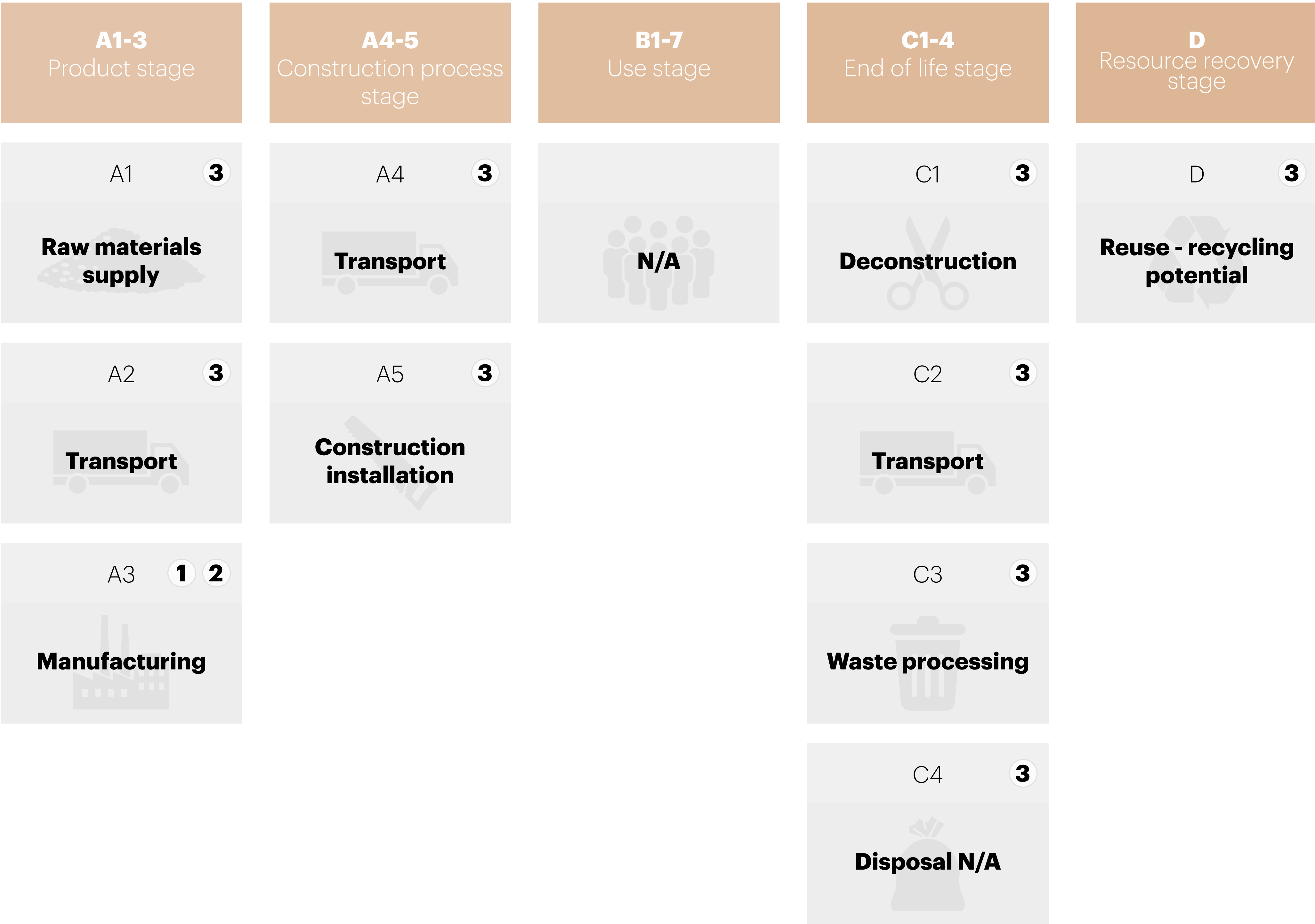
Rewind® Rib

Rewind® Dilour

An Environmental Product Declaration (EPD) transparently reports objective, comparable and third-party verified data about products and services environmental performances from a lifecycle perspective.

A Product Carbon Footprint (PCF) is similar to an EPD, but is limited to reporting third-party verified carbon footprint impact. It is based on the ISO 14067 standard.

For the verification statement:



Scope 1
Direct emissions (from your chimney)

Scope 2
Electricity use emissions

Scope 3
Everything else (raw materials, end-of-life, transport...)









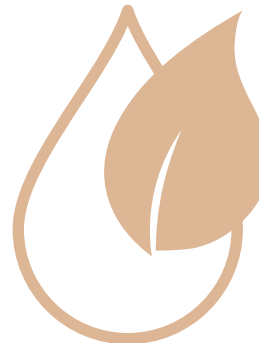





REWIND®

Cradle-to-cradle

For the Cradle to Cradle certification of Rewind®, visit

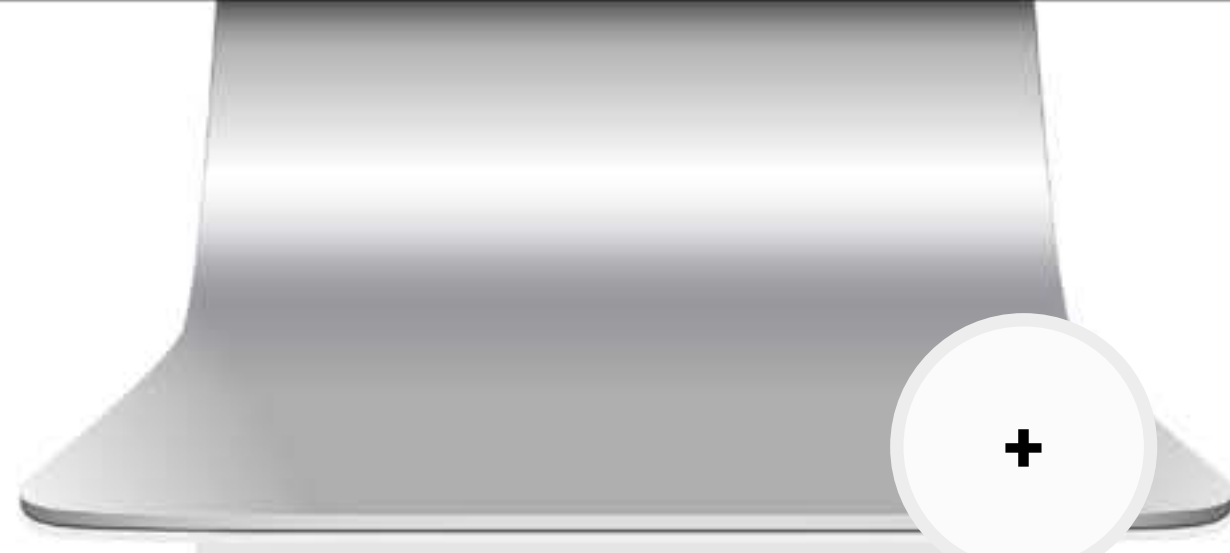
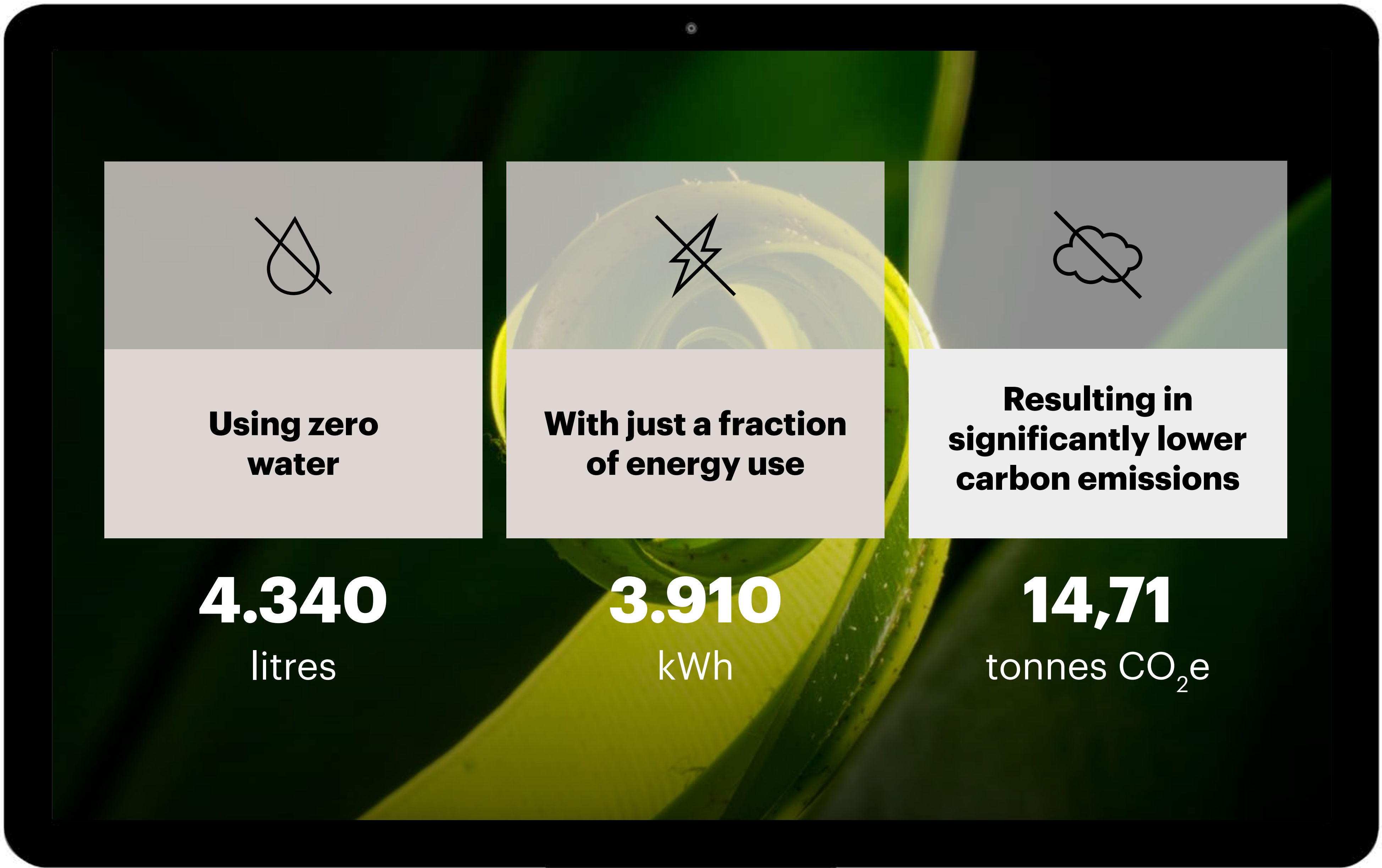
The Cradle to Cradle Certified® Product Standard provides the framework to assess the safety, circularity and responsibility of materials and products across five categories of sustainability performance:

	Material health This category in the Cradle to Cradle Certified® Product Standard assesses that chemicals and materials used in the product are selected to prioritize the protection of human health and the environment, generating a positive impact on the quality of materials available for future use and cycling.	 Silver
	Product circularity This category in the Cradle to Cradle Certified® Product Standard assesses that products are intentionally designed for their next use and are actively cycled in their intended cycling pathways.	 Gold
	Clean air & climate protection This category in the Cradle to Cradle Certified® Product Standard assesses that product manufacturing results in a positive impact on air quality, the renewable energy supply, and the balance of climate changing greenhouse gasses.	 Silver
	Water & soil stewardship This category in the Cradle to Cradle Certified® Product Standard assesses that water and soil are treated as precious and shared resources. Watersheds and soil ecosystems are protected, and clean water and healthy soils are available to people and all other organisms.	 Silver
	Social fairness This category in the Cradle to Cradle Certified® Product Standard assesses that companies are committed to upholding human rights and applying fair and equitable business practices.	 Silver



What are our savings if we choose Rewind Contract carpet?

10.000 m² →



+

Cradle-to-gate

4,14

This reduction is based on the difference in total Global Warming Potential of raw materials and the production process of Rewind® 900 Dilour and traditional Primavera Resine carpet.

+

Recycling

10,57

This reduction in environmental impact relates to the difference in end-of-life of 100% recycling Rewind® 900 Dilour versus 100% incineration traditional Primavera Resine carpet.

REWIND®

